



134 Sand Park Road  
Cedar Grove, NJ 07009  
Phone: 973 857-6480 Fax: 973 857-4943  
E-Mail: Sales@radiantwraps.com  
Web Site: www.radiantwraps.com

## **REMOVING EXISTING BACK PANELS & SUPPORT BRACKETS**



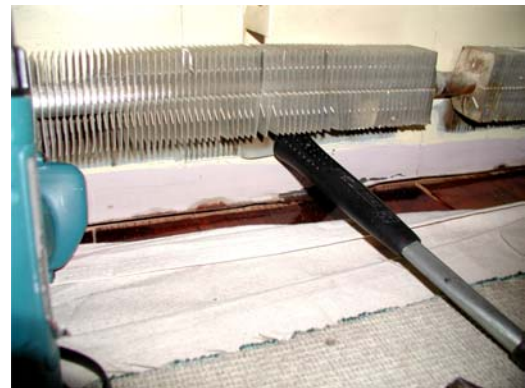
**#1** – Remove all existing snap on or slide on components to prepare enclosure for removal.



**#2** – Use hammer or cat's paw to loosen support brackets. This style of support bracket can be flattened and slipped out with the existing back panel.



**#3** – Gently raise the height of the fins to clear the bottom of the bracket and use the head of a hammer to flatten the bracket.



**#4** – The bottom of the bracket has now been flattened against the back panel so that it will clear the heating element fins.



**#5** – Loosen any paint or caulk seals and make sure all nails anchoring the back panel to the wall have been removed.



**#6** – Carefully slide the back panel up and out.